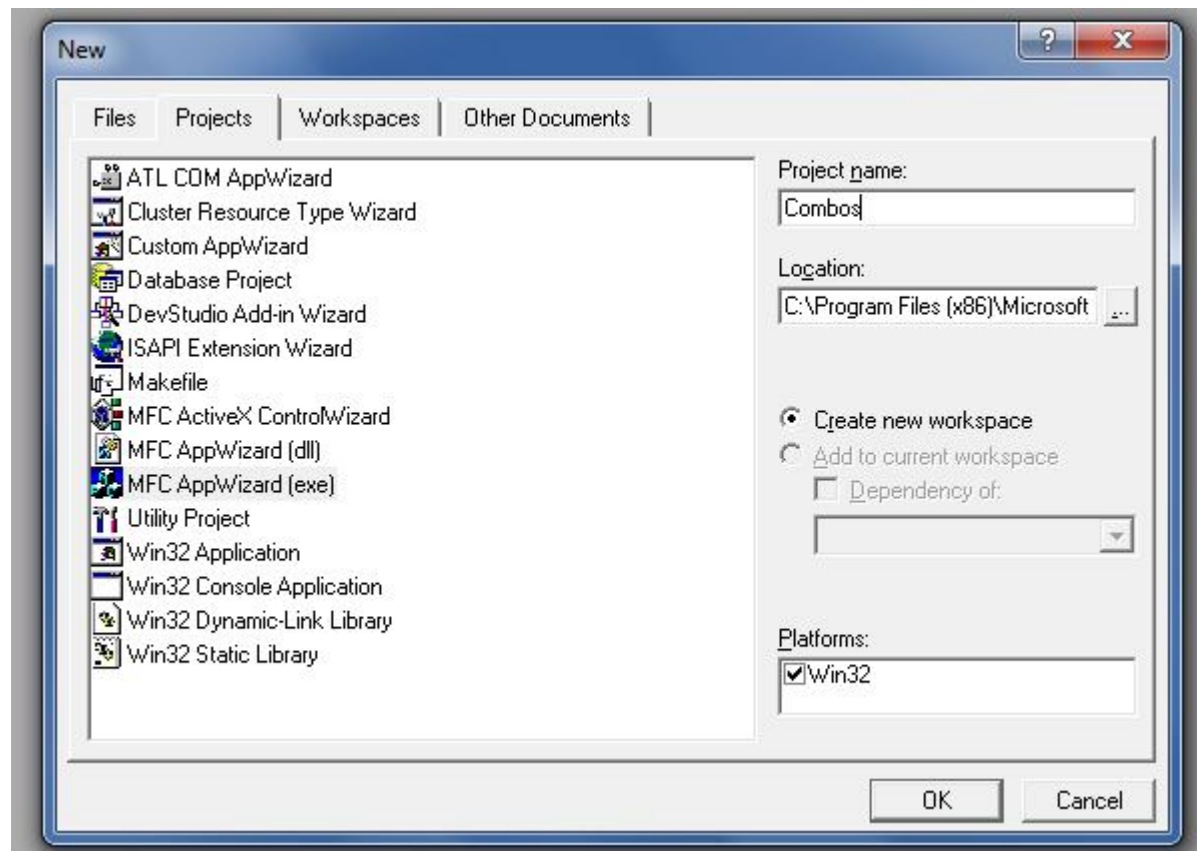
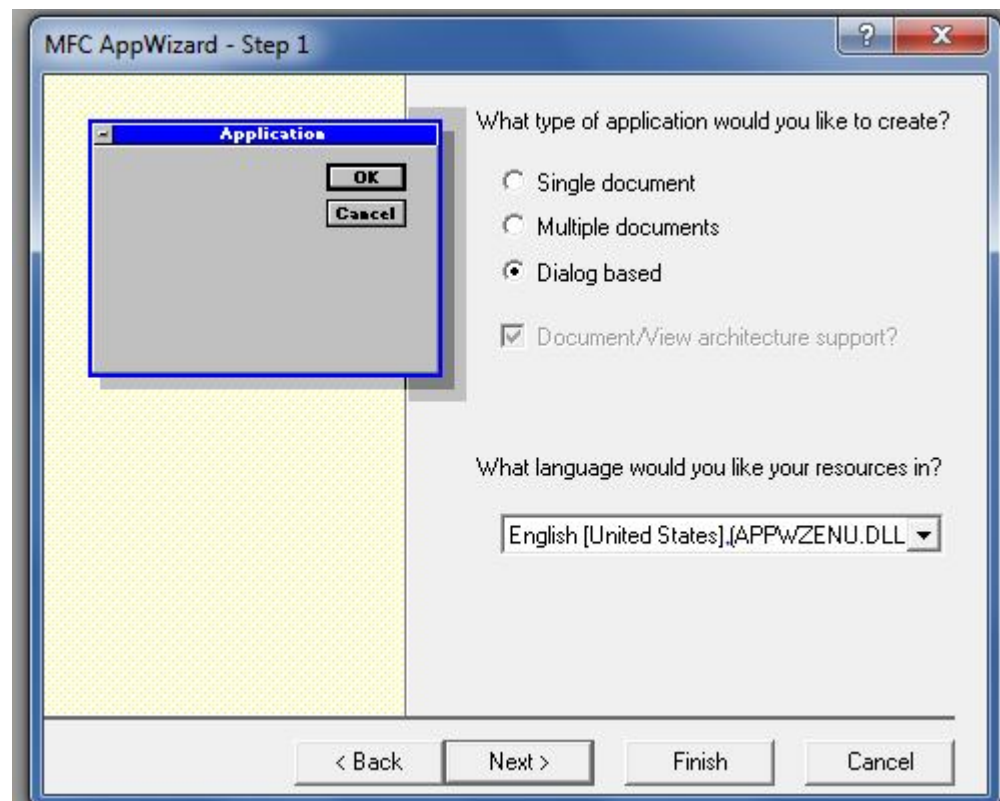
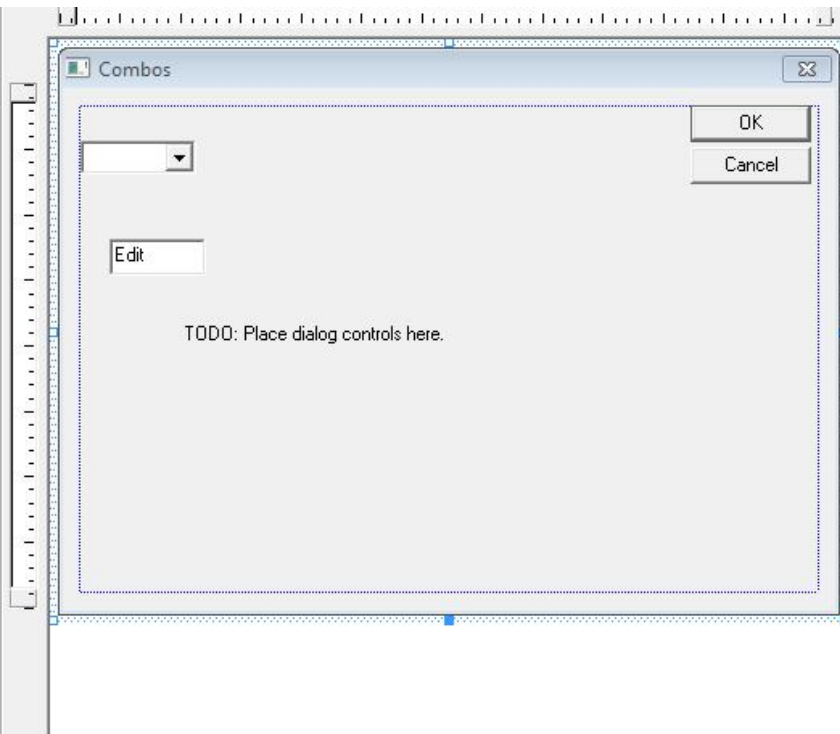


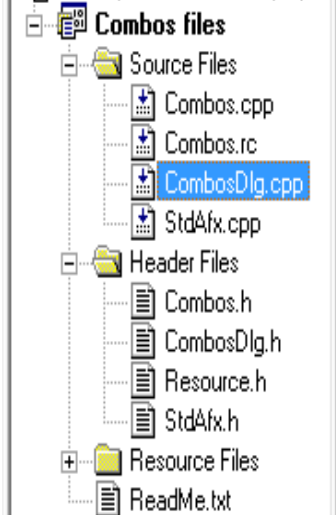
Combo Box







Workspace 'Combos': 1 project



```
BEGIN_MESSAGE_MAP(CCombosDlg, CDialog)
    //{{AFX_MSG_MAP(CCombosDlg)
    ON_WM_SYSCOMMAND()
    ON_WM_PAINT()
    ON_WM_QUERYDRAGICON()
    //}}AFX_MSG_MAP
END_MESSAGE_MAP()

////////////////////////////////////
// CCombosDlg message handlers

BOOL CCombosDlg::OnInitDialog()
{
    CDialog::OnInitDialog();

    // Add "About..." menu item to system menu.

    // IDM_ABOUTBOX must be in the system command range.
    ASSERT((IDM_ABOUTBOX & 0xFFF0) == IDM_ABOUTBOX);
    ASSERT(IDM_ABOUTBOX < 0xF000);

    CMenu* pSysMenu = GetSystemMenu(FALSE);
    if (pSysMenu != NULL)
    {
        CString strAboutMenu;
        strAboutMenu.LoadString(IDS_ABOUTBOX);
        if (!strAboutMenu.IsEmpty())
        {
            pSysMenu->AppendMenu(MF_SEPARATOR);
            pSysMenu->AppendMenu(MF_STRING, IDM_ABOUTBOX, strAboutMenu);
        }
    }

    // Get the icon for this dialog. The framework does this automatically
```

Clas... Res... FileV...

CombosDlg.cpp

```
BOOL CCombosDlg::OnInitDialog()
{
    CDialog::OnInitDialog();
    m_combo.AddString("Item 01");
    m_combo.AddString("Item 02");
    m_combo.AddString("Item 03");
    m_combo.AddString("Item 04");
    m_combo.AddString("Item 05");
    m_combo.AddString("Item 06");
    m_combo.AddString("Item 07");
    m_combo.AddString("Item 08");
    m_combo.AddString("Item 09");
    m_combo.AddString("Item 10");
    m_combo.AddString("Item 11");
    m_combo.AddString("Item 12");
    m_combo.SetCurSel(0);

    // Add "About..." menu item to system menu.

    // IDM_ABOUTBOX must be in the system command range.
    ASSERT((IDM_ABOUTBOX & 0xFFF0) == IDM_ABOUTBOX);
    ASSERT(IDM_ABOUTBOX < 0xF000);
}
```



```
void CComboDlg::OnSelchangeCombo1()
{
    m_combo.GetLBText(m_combo.GetCurSel(), m_text);
    UpdateData(false);

    // TODO: Add your control notification handler code here
}
```


CombosDlg.h and CombosDlg.cpp

```
class CAboutDlg : public CDialog
{
public:
    CAboutDlg();

// Dialog Data
//{{AFX_DATA(CAboutDlg)
enum { IDD = IDD_ABOUTBOX };
//}}AFX_DATA
    CComboBox m_combo;
    CString m_combotext;
    CString m_text;

// ClassWizard generated virtual function overrides
//{{AFX_VIRTUAL(CAboutDlg)
protected:
    virtual void DoDataExchange(CDataExchange* pDX);    // DDX/DDV support
//}}AFX_VIRTUAL
};
```